

## New Front plates

Available for all mirror mounts of the series

MDI, MDI-HS, RD2, RD2-HS

New customized front plate with 12 mm clearance hole with clamping device for fixing of Faser Couplers: MDI-HS-2-3012T

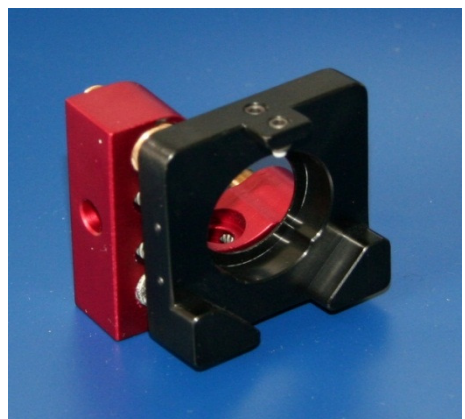


New customized front plate with 12 mm clearance hole with a notch opposite the grub screw for fixing of Faser Couplers

MDI-HS-2-3012I



New front plate with combined holding fixture for 1 inch and 1,5 inch: MDI-HS-2-3050-25



### MDI-PBS-Mount:

New holding fixture for Prisms, Polarization cubes etc.

RD-CH-PBS-MDI-1" & 0,5"

