

RD2



The **RD2** is a stable mirror mount with an integrated base. It can be used for optics up to two inch.

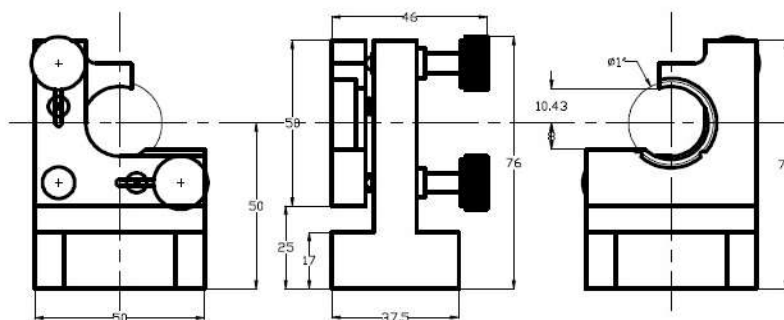
Features:

- Very stable mirror mount
- Available as “right hand” and “left hand” version.
- Different front plates available
- With M8 thread (standard)
- M6 thread is also available
- #1/4-20 thread available on request

Screw Options:

- Fine thread screws Model 5:
 - with **250 $\mu\text{m}/\text{turn}$ (100 TPI)**
 - with **150 $\mu\text{m}/\text{turn}$ (170 TPI)**
 - with **100 $\mu\text{m}/\text{turn}$ (250 TPI)**
- Micrometer screws:

500 $\mu\text{m}/\text{turn}$ (50 TPI)
250 $\mu\text{m}/\text{turn}$ (100 TPI)
100 $\mu\text{m}/\text{turn}$ (250 TPI)



RD2-HS



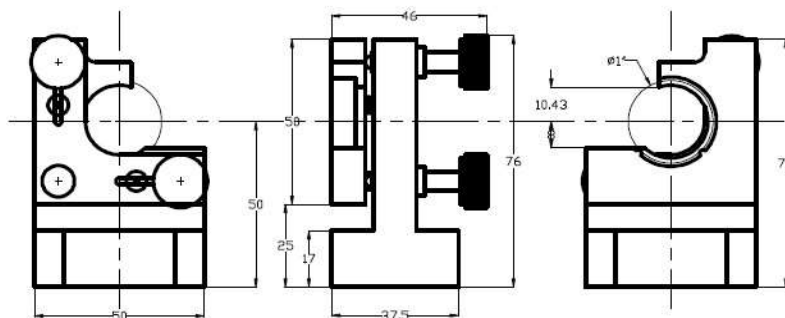
The **RD2-HS** is the high stable version of the RD2 mirror mount. The RD2-HS can be used for applications where a high stability is necessary.

Features:

- High stable mirror mount
- Available as “right hand” and “left hand” version
- 4 springs
- Stainless steel insert for stabilization
- Different front plates available
- With M8 thread (standard)
- M6 thread is also available
- #1/4-20 thread available on request





Screw Options:

- Fine thread screws Model 5:
 - with 250 $\mu\text{m}/\text{turn}$
 - with 150 $\mu\text{m}/\text{turn}$ (170 TPI)
 - with 100 $\mu\text{m}/\text{turn}$ (250 TPI)
- Micrometer screws:
 - 500 $\mu\text{m}/\text{turn}$ (50 TPI)
 - 250 $\mu\text{m}/\text{turn}$ (100 TPI)
 - 100 $\mu\text{m}/\text{turn}$ (250 TPI)



Mirror Mounts

Back plates RD2

			
RD2-L2-30...	RD2-L3-30...	RD2-R2-40...	RD2-R3-40...

The order number of the desired RD2 mirror mount consists of the number of the back plate including quantity of the screws and the number of the chosen front plate.

Back plates RD2-HS

		<p><i>Due to strong spring forces we offer the RD2-HS only with two alignment screws. If a third screw should be necessary we recommend the screw as hexagon socket for easier alignment</i></p>
RD2-HS-L2-30...	RD2-HS-R2-40...	

The order number of the desired RD2-HS mirror mount consists of the number of the back plate including quantity of the screws and the number of the chosen front plate.

Mirror Mounts

Front plates

				
...-3000/4000	...-3010/4010 (6H7)	...-3021/4021 (1/2")	...-3025/4025 (1")	...-3030/4030 (1")
				
3030z/4030z (1")	...-3000-25 (1") ...-4000-25 (1")	...-3060/4060 (1")	...-3040/4040 (1,5")	...-3045/4045 (2")
				
...-3050/4050 (1,5")	...-3055/4055 (2")	...-3035Up/ ...-4035Up	...-3035Down/ ...-4035Down	...-U(p) (1")
				
...-D(own) (1")	...-RM (Rotation Mount)			