

MDI



The **MDI** is our most popular mirror mount. The mount is available with different front plates (from closed up to two inch) and two or three screws. It is our standard mirror mount which can be used for most applications in the laboratory.

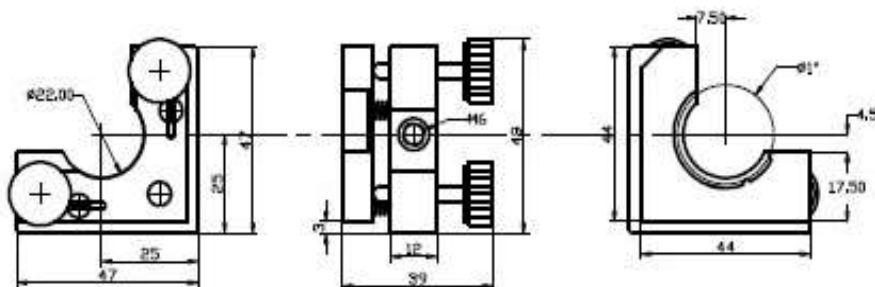
Features:

- Stable mirror mount
- Open or closed back plate
- Different front plates available
- M6 thread with M4 inner
- lowering (standard)
- M4 or M8 thread available on request
- #8-32 or #1/4-20 thread available on request

Screw Options:

- Fine thread screws Model 4:
 - with 250 $\mu\text{m}/\text{turn}$ (100 TPI)
 - with 150 $\mu\text{m}/\text{turn}$ (170 TPI)
 - with 100 $\mu\text{m}/\text{turn}$ (250 TPI)
- Micrometer screws:

500 $\mu\text{m}/\text{turn}$ (50 TPI)
 250 $\mu\text{m}/\text{turn}$ (100 TPI)
 100 $\mu\text{m}/\text{turn}$ (250 TPI)



MDI-HS



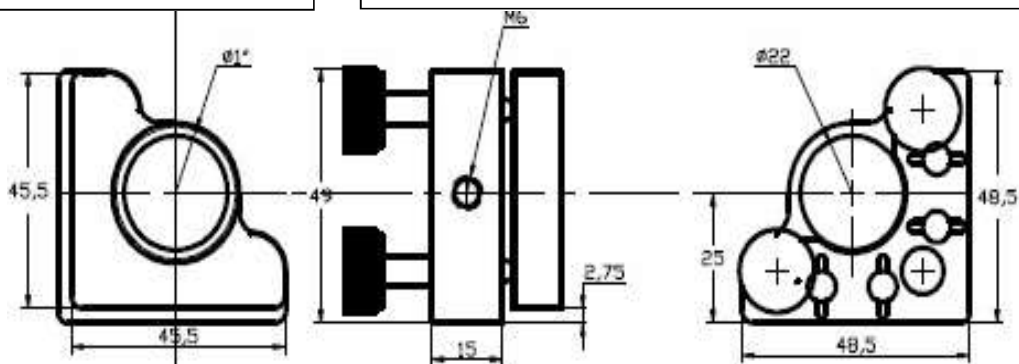
The **MDI-HS** is the high stable version of the MDI mirror mount. The MDI-HS can be used for applications where a high stability is necessary.

Features:

- High stable mirror mount
- 4 springs
- Stainless steel insert for stabilization
- Thicker open back plate
- Different front plates available
- M6 thread with M4 inner
- lowering (standard)
- M4 thread available on request
- #8-32 or #1/4-20 thread available on request


Screw Options:

- Fine thread screws Model 4:
 - with 250 $\mu\text{m}/\text{turn}$ (100 TPI)
 - with 150 $\mu\text{m}/\text{turn}$ (170 TPI)
 - with 100 $\mu\text{m}/\text{turn}$ (250 TPI)
- Micrometer screws:
 - with 500 $\mu\text{m}/\text{turn}$
 - with 250 $\mu\text{m}/\text{turn}$
 - with 100 $\mu\text{m}/\text{turn}$




Mirror Mounts

Back plates MDI

			
MDI-2-...	MDI-3-...	MDI-2G-...	MDI-3G-...

The order number of the desired MDI mirror mount consists of the number of the back plate including quantity of the screws and the number of the chosen front plate.

Back plates MDI-HS

	<i>Due to strong spring forces we offer the MDI-HS only with two alignment screws. If a third screw should be necessary, we recommend the screw as hexagon socket for easier alignment.</i>
MDI-HS-2-...	

The order number of the desired MDI-HS mirror mount consists of the number of the back plate including quantity of the screws and the number of the chosen front plate.

100 μm /turn (250 TPI) fine thread screws



Mirror Mounts

Front plates

				
...-3000	...-3010 (6H7)	...-3021 (1/2")	...-3025 (1")	...-3030z (1")
				
...-3030 (1")	...-3060a (1")	...-3060b (1")	...-3000-25 (1")	...-3040 (1,5")
				
...-3050 (1,5")	...-3000-50 (1,5")	...-3045 (2")	...-3055 (2")	...-3035Up
				
...-3035Down	...-3000-27 (Optics 27x50 mm)	...-3030PH (Prism Holder)	...-3030H (1")	...-3025/50 (1" and 1,5")
				
...-3012I (12 mm)	...-3012T (12 mm)	...-RM (Rotation Mount)	...-RMup	...-3030up
				
...-AOM	...-3000-30	...-U(p) (1")	...-360°	