

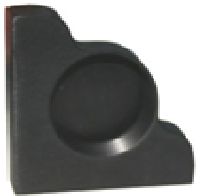
**Bodies**



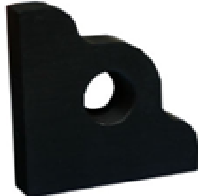
*Due to strong spring forces we offer the MDI-H only with two alignment screws. If a third screw should be necessary, we recommend the screw as hexagon socket for easier alignment*

MDI-H-2...

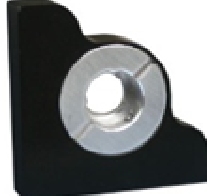
**Frontplates**



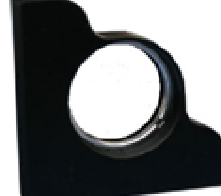
...-3010  
(1")



...-3021  
(1/2")



...-E3021  
(1/2")



...-3025  
(1")

**Easy MDI**



**E-MDI-2-3031**

The Easy MDI is a low cost version of the MDI mirror mount. But the Easy MDI also guarantees a precise and repeatable adjustment for one inch optics.

**Features:**

- Precisely adjustable
- Low price

**The difference to the original MDI:**

- shorter adjusting range
- with smaller screw head
- no carbide spikes
- without thread but with lowering for M4 screws
- only available with 2 screws