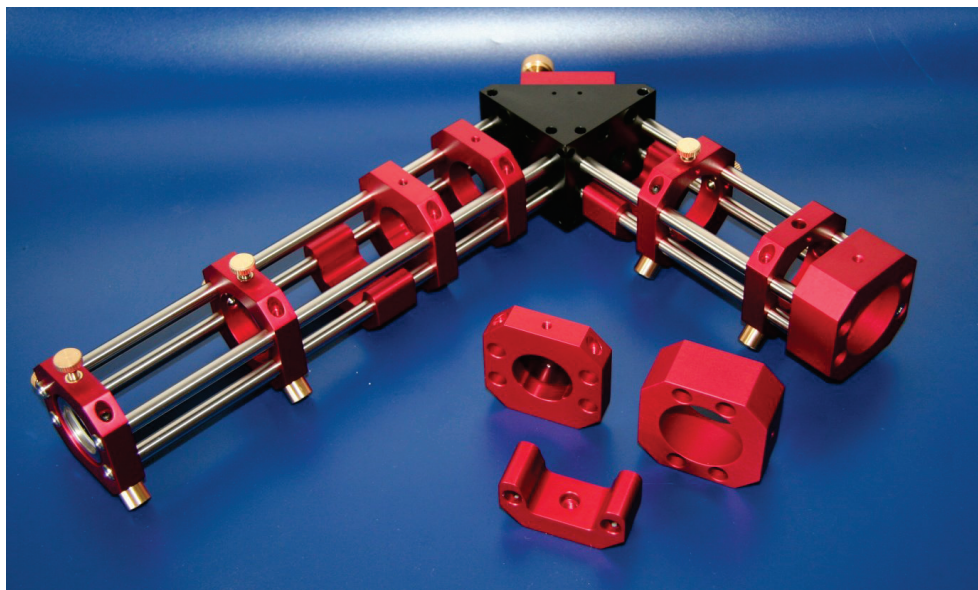


## Beam Guide System



Based on our variable lens mounts RD-VL we created a high stable Beam Guide System **RD-BGS** with a rod diameter of 8 mm.

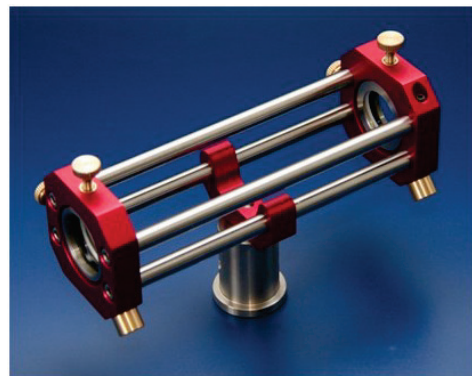
## Telescope

- Telescope for 1 inch or 1/2 inch optics

**RD-BGS-T-0,5"** 0,5 inch

**RD-BGS-T-1"** 1 inch

- including:
  - 1 pc. RD-BGS-VL (endpiece)
  - 1 pc. RD-BGL-VL (movable)
  - 1 pc. RD-BGS-BB
  - 4 pcs RD-BGS-R-150 mm



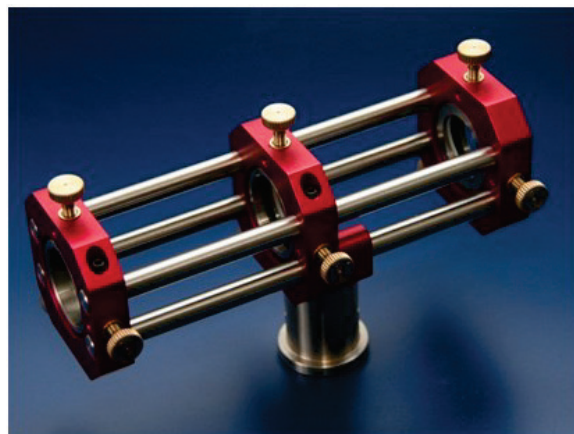
## Spatial Filter

- Spatial Filter for 1 inch or 1/2 inch optics

**RD-BGS-SF-0,5"** 0,5 inch

**RD-BGS-SF-1"** 1 inch

- including:
  - 1 pc. RD-BGS-VL (endpiece)
  - 2 pcs RD-BGL-VL (movable)
  - 1 pc. RD-BGS-BB
  - 4 pcs RD-BGS-R-150 mm



## Variable Lens Mount

- Variable lens mount for 1 inch or ½ inch optics or with an iris

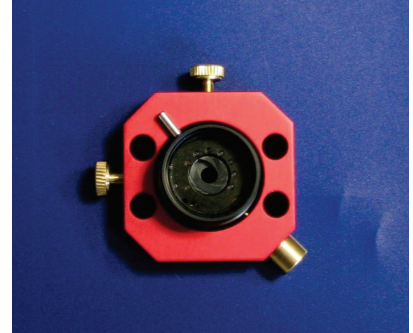
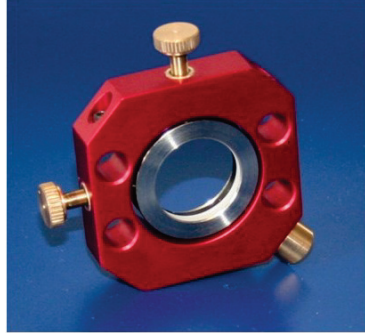
### Features:

- Stable lens mount
- 2 screws & 1 thread pin
- Several inserts available
- Option: with 150 µm fine thread screws

**RD-BGS-VL-0,5"**      *0,5 inch*

**RD-BGS-VL-1"**      *1 inch*

**RD-BGS-VL-I**      *Iris*



## Variable Mirror Mount & Fiber Coupler

This variable lens mount consists of an adjustment body and a lens mount. The great advantage of the variable lens mount is the possibility to adjust the lens in the xyz-plane with the aid of a small round mirror mount.

### Features:

- Stable lens mount
- 2 screws & 1 thread pin
- Several inserts available
- Option: with 150 µm fine thread screws

**RD-BGS-VL-MM-6H7**

**RD-BGS-VL-MM-1/4"**

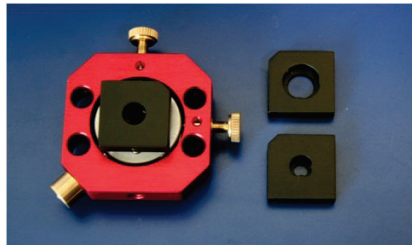
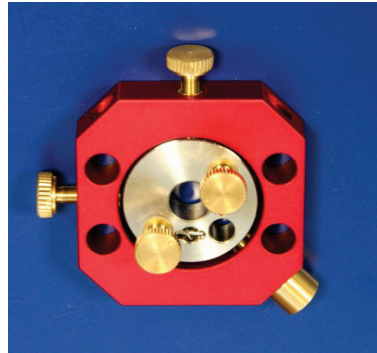
**RD-BGS-VL-MM-0,5"**

The variable lens mount is also available with two different fiber couplers:

- **SMA**
- **FC/PC**

### Mounts for

- 6 mm, 8 mm, 12 mm fiber couplers

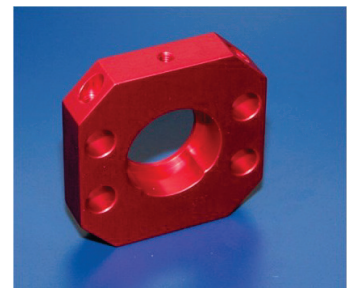


## Fixed Plate

- For lenses, pinholes, optical      Dia-
- phragms etc.
- For 1 inch or ½ inch

**RD-BGS-FP-0,5"**      *0,5 inch*

**RD-BGS-FP-1"**      *1 inch*

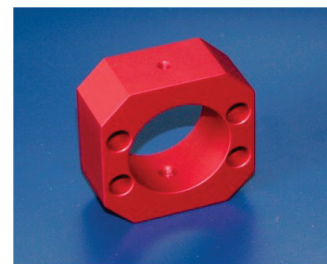


# Beam Guide System

## Laser Holders

- For mounting of e.g. HeNe-Laser
- Diameter 35 mm

**RD-BGS-LH**



## Rod Bases

- Mounting Base for Rods
  - M4 Thread
- or
- M6 Threads with Counterbore for M4

**RD-BGS-BB (big mounting base)**  
**RD-BGS-SB (small mounting base)**



## Rods

- Diameter 8 mm

**RD-BGS-R-100**      50 mm - 100 mm  
**RD-BGS-R-200**      150 mm - 200 mm  
**RD-BGS-R-300**      250 mm - 300 mm

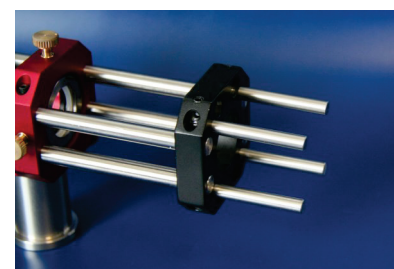
- Other lengths on request



## Adapter Plates

- Adapter plates for rods with a diameter of 6 mm

**RD-BGS-AP**

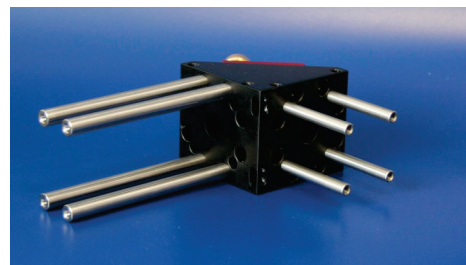


## 90° Mounts

- 90° Mount

**RD-BGS-90°M**

*Example of use:*





## Translation Stages

- Integrated Translation Stage for precise adjustment
- Adjustment line 30 mm

### RD-BGS-TS

- including:
  - 1 pc. RD-BGS-VL (endpiece)
  - 1 pc. RD-BGL-VL (movable)
  - 1 pc. RD-BGS-FP-1" incl. adapter plate
  - 4 pcs RD-BGS-R-150 mm
  - 1 pc. RD-KUL-15-01-S



## Rotation Mounts

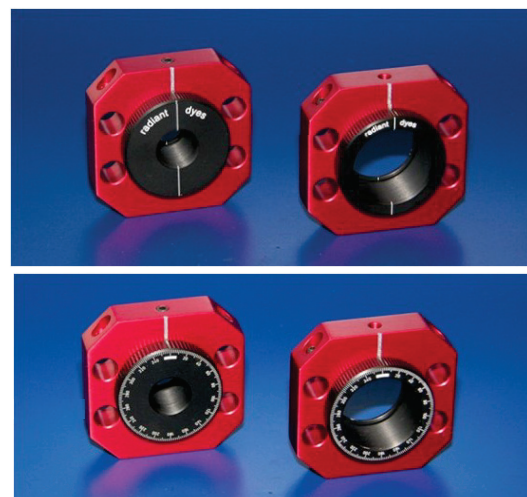
- Rotation mounts for 1/2 inch or 1 inch
- With or without scale
- With grub screw including a spring mounted ball for precise adjusting
- Optics are fixed by a retaining ring

**RD-BGS-RM- 0,5"** 0,5 inch without scale

**RD-BGS-RM- 1"** 1 inch without scale

**RD-BGS-RM-SK- 05"** 0,5 inch with scale

**RD-BGS-RM-SK- 1"** 1 inch with scale



## Cubes

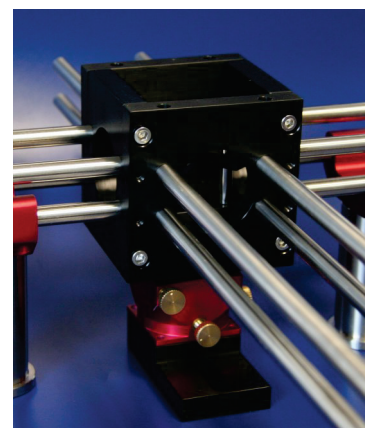
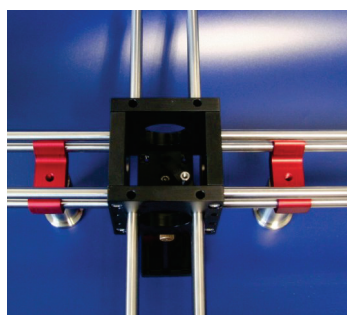
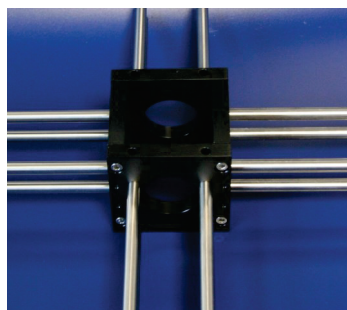
- Beam Guide Cubes
- To combine up to four Beam Guide Systems in one center position

### RD-BGS-C

### Special application:

- Cubes with integrated prism turn table *RD-PDT-S* for mounting of optical devices

### RD-BGS-C-PDT



## MXI cage systems



### MXI cage system

*for Radiant Dyes*

*compatible for Thorlabs and Qioptic*

## Rotation Mount RD-RMP-1“

### RD-RMP-1“

- Precise rotation mount with 360° laser engraved scale
- Finest adjustment 20°
- Resolution < 0,003°
- Also available with PiezoMike

